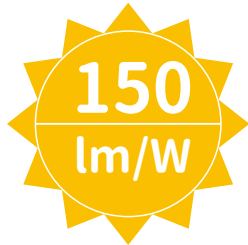


LED Batten Light with Sensor



Motion+daylight sensor
Detection area: 2.5-4 metres
Hold on time: 10s/1min/5min/30min
With remote control

Shenzhen ERS Technology

Factory Add: C209, Baohuasen International Center, Qianjin Second Road, Xixiang Town, Bao'an District, Shenzhen, China
Warehouse Add: 57 Tarnard Dr, Braeside VIC 3195

Tel: 048 470 3010

Email: info@erstech.com.au



IPART
Independent Pricing and Regulatory Tribunal
New South Wales



LM-80 TM 21 LM 79
ISTMT LCP



Victorian
Energy
Upgrades



ESSENTIAL SERVICES COMMISSION

APPLICATION

Indoor lighting, with IP42, it can be used at supper market, family mart, corridor, parking lots, factory, warehouse, school, hospital, public building, metro station, train station, airport terminal and etc



SPECIFICATIONS

Item No.	ERS-AU12W60S	ERS-AU20W60S	ERS-AU12W120S	ERS-AU14W120S	ERS-AU16W120S	ERS-AU18W120S
Product Size (mm)	700X83X72	700X83X72	1170X83X72	1170X83X72	1170X83X72	1170X83X72
Power	12W	20W	12W	14W	16W	18W
Efficiency	1800lm	3000lm	1800lm	2100lm	2400lm	2700lm
Input Voltage	AC220-240V, 50Hz					
Efficiency	150lm/w					
Sensor	Daylight & Microwave Motion Sensor, Sensing distance 2.5-4m					
Dimmable	PWM					
Driver Brand	ERS Element non-isolated driver 3 years warranty					
LED Type	SMD 2835					
CCT	2700-6500K					
CRI	Ra > 80					
Power Factor	> 0.9					
Beam Angle	120°					
IP Rating	IP 42					
Warranty	3 years					
Working Temp	-20~50°C					
Lamp Body Material	PC+SPCC					

Shenzhen ERS Technology

Factory Add: C209, Baohuasen International Center, Qianjin Second Road, Xixiang Town, Bao'an District, Shenzhen, China
Warehouse Add: 57 Tarnard Dr, Braeside VIC 3195

Tel: 048 470 3010

Email: info@erstech.com.au



IPART
Independent Pricing and Regulatory Tribunal
New South Wales



**Victorian
Energy
Upgrades**



LM-80 TM 21 LM 79
ISTMT LCP



Item No.	ERS-AU24W120S	ERS-AU36W120S	ERS-AU40W120S	ERS-AU48W150S	ERS-AU50W150S	ERS-AU54W150S
Product Size (mm)	1170X83X72	1170X83X72	1170X83X72	1470X83X72	1470X83X72	1470X83X72
Power	24W	36W	40W	48W	50W	54W
Efficiency	3600lm	5400lm	6000lm	7200lm	7500lm	8100lm
Input Voltage	AC220-240V,50Hz					
Efficiency	150lm/w					
Sensor	Daylight & Microwave Motion Sensor, Sensing distance 3-5m					
Dimmable	PWM					
Driver Brand	ERS Element non-isolated driver 3 years warranty					
LED Type	SMD 2835					
CCT	2700-6500K					
CRI	Ra > 80					
Power Factor	> 0.9					
Beam Angle	120°					
IP Rating	IP 42					
Warranty	3 years					
Working Temp	-20~50°C					
Lamp Body Material	PC+SPCC					

PACKING

Item No.	ERS-AU12/20W60S	ERS-AU12/14/16/18/24/36W120S	ERS-AU40/48/50/54W150S
Carton Size (mm)	747X240X280	1210X235X280	1515X240X185
Qty/CTN	9	9	6
N.W.(KG)	11	14.6	12.8
G.W.(KG)	11.7	16.1	14.2

Shenzhen ERS Technology

Factory Add: C209, Baohuasen International Center, Qianjin Second Road, Xixiang Town, Bao'an District, Shenzhen, China
Warehouse Add: 57 Tarnard Dr, Braeside VIC 3195

Tel: 048 470 3010

Email: info@erstech.com.au



Victorian
Energy
Upgrades



LM-80 TM 21 LM 79
ISTMT LCP



LED MANUAL INSTRUCTION



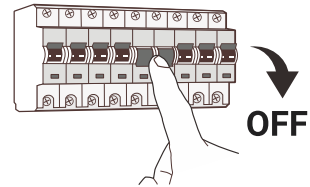
Safety Notice:

- ❶ Installation should be done by registered electricians.
- ❷ Before replacing the driver, please switch off the power supply and wait until it cools down completely.
- ❸ Never touch the working luminaire
- ❹ In any case of malfunction, switch off the power supply immediately, and do not try to repair it yourself.
- ❺ Repairment should only be done by registered electricians or official service agent.

Include

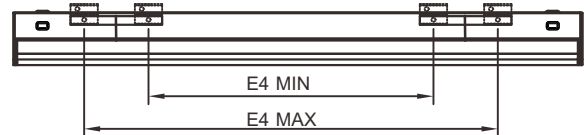
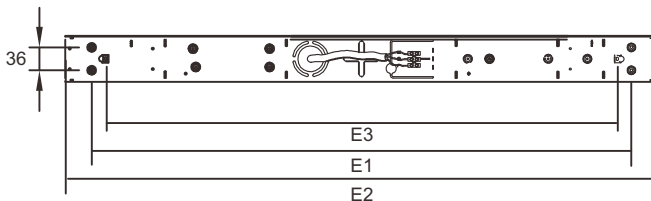


Not Include



WARNING

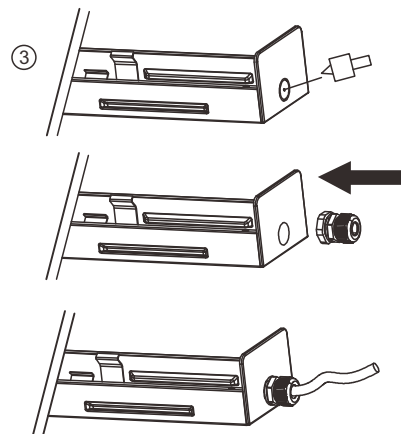
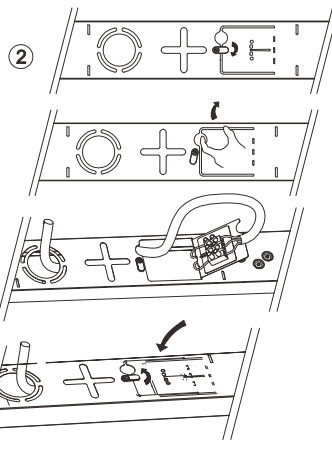
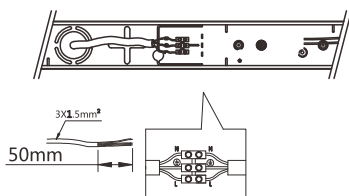
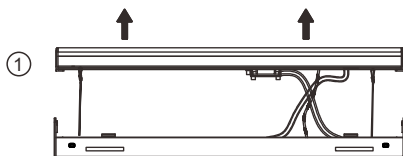
A Switch off the power supply before installation



Product Size	E1(mm)	E2(mm)	E3(mm)	E4(mm)Min	E4(mm)Max
700x83x72mm	493	700	638	270	400
1170x83x72mm	693	1170	1107	680	870
1470x83x72mm	1263	1470	1407	980	1180

B

C



Shenzhen ERS Technology

Factory Add: C209, Baohuasen International Center, Qianjin Second Road, Xixiang Town, Bao'an District, Shenzhen, China
Warehouse Add: 57 Tarnard Dr, Braeside VIC 3195

Tel: 048 470 3010

Email: info@erstech.com.au



IPART
Independent Pricing and Regulatory Tribunal
New South Wales



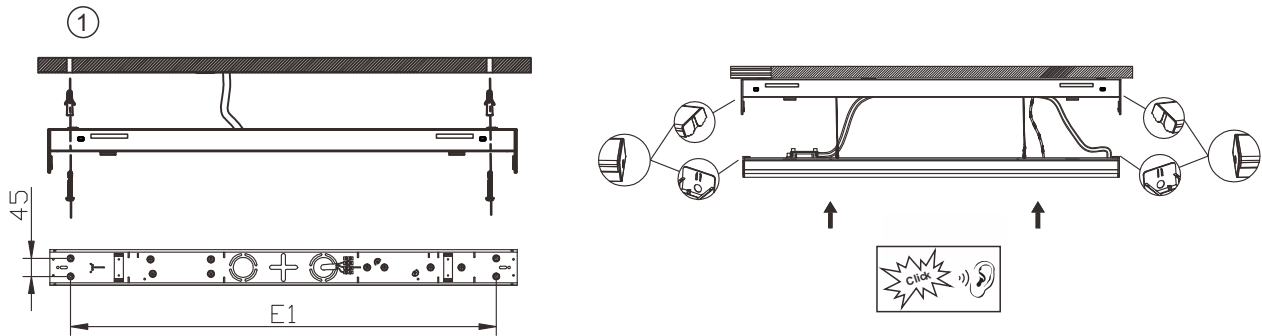
Victorian Energy Upgrades



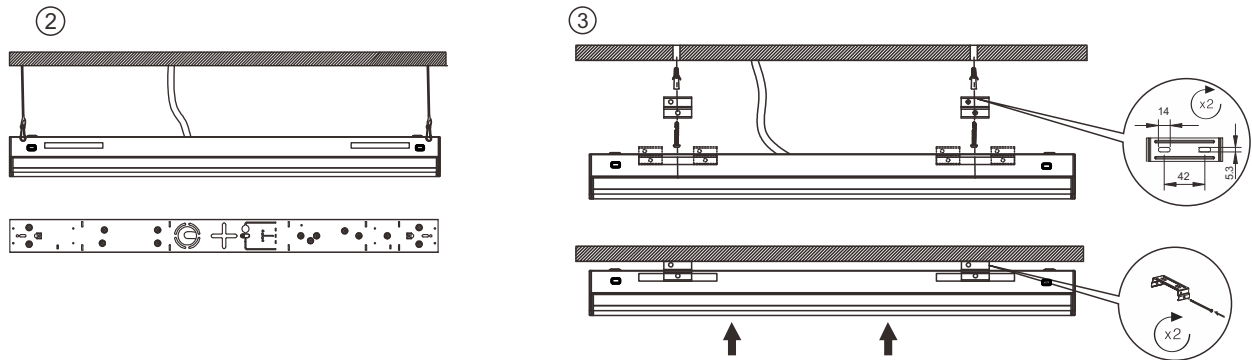
LM-80 TM 21 LM 79
ISTMT LCP



D



E

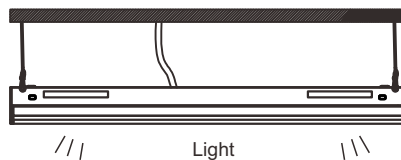


WARNING

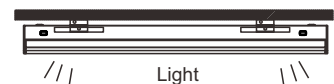
Switch on the power supply
before installation

F

①



②



Shenzhen ERS Technology

Factory Add: C209, Baohuasen International Center, Qianjin Second
Road, Xixiang Town, Bao'an District, Shenzhen, China
Warehouse Add: 57 Tarnard Dr, Braeside VIC 3195

Tel: 048 470 3010

Email: info@erstech.com.au



IPART
Independent Pricing and Regulatory Tribunal
New South Wales



SAA
APPROVALS



Victorian
Energy
Upgrades



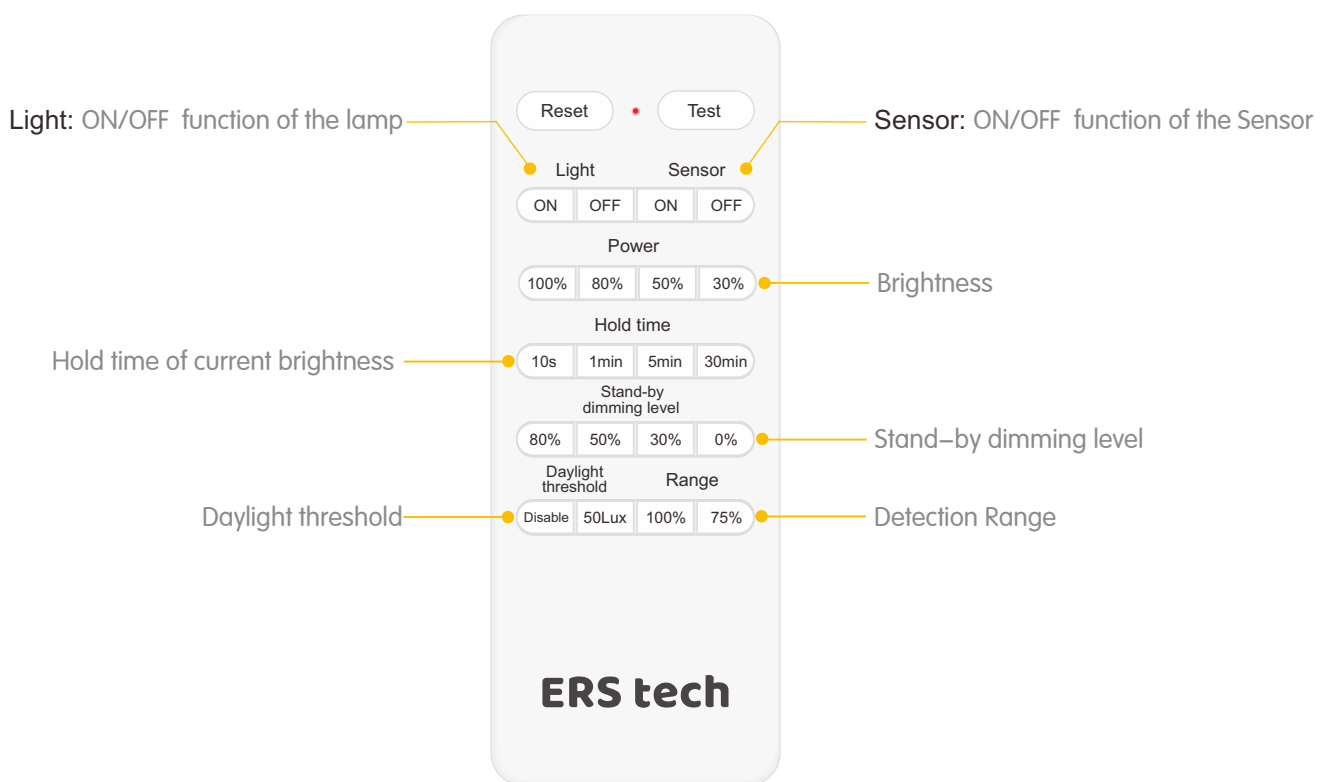
3 year
warranty

LM-80 TM 21 LM 79
ISTMT LCP



ESSENTIAL SERVICES COMMISSION

DETAILS



Shenzhen ERS Technology

Factory Add: C209, Baohuasen International Center, Qianjin Second Road, Xixiang Town, Bao'an District, Shenzhen, China
Warehouse Add: 57 Tarnard Dr, Braeside VIC 3195

Tel: 048 470 3010
Email: info@erstech.com.au



IPART
Independent Pricing and Regulatory Tribunal
New South Wales



Victorian Energy Upgrades



LM-80 TM 21 LM 79
ISTMT LCP

